

SINYOL
Pipe Fittings LLC.

SINCE 1986



PRODUCT
Catalog



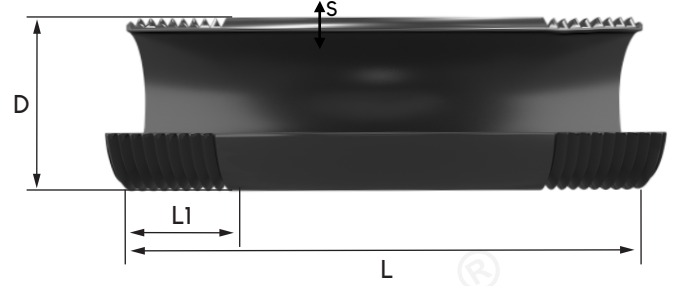
www.sinyol.com.tr

PIPE NIPPLE

One thread



Two thread



Pipe Nipples are produced in accordance from EN 10255 M series tubes and available as carbon steel and hot dip galvanized.

Product Norm is according to EN 10241 M.
Steel Quality is S195T.

External thread conical BSPT-R (ISO 7-1 / EN 10226-1) and External thread cylindrical BSPG-G (ISO 228-1) can be done.

Upon request, we also produce External thread conical (NPT) from ASTM A53 tubes.

Unit: mm

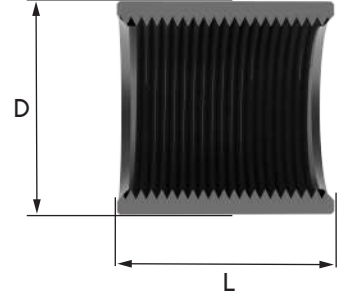
SIZE	LENGTH(L)	OUTSIDE DIAMETER(D)	WALL THICKNESS(S)	THREAD LENGTH(L1)
1\8"	15-2000	10.5	2.2	7.4
1\4"	20-2000	13.7	2.2	11.0
3\8"	25-2000	17.2	2.3	11.4
1\2"	30-2000	21.3	2.6	15.0
3\4"	30-2000	26.9	2.6	16.3
1"	30-2000	33.7	3.2	19.1
1.1\4"	40-2000	42.4	3.2	21.4
1.1\2"	40-2000	48.3	3.2	21.4
2"	40-2000	60.3	3.6	25.7
2.1\2"	50-2000	76.1	3.6	30.2
3"	60-2000	88.9	4.0	33.3
4"	60-2000	114.3	4.5	39.3
5"	80-2000	139.7	5.0	43.6
6"	80-2000	165.1	5.0	43.6

COUPLING

Half Coupling



Coupling



Pipe Couplings are produced in accordance from EN 10217-1 carbon steel tubes. It is available as carbon steel, electro galvanized and upon request hot dip galvanized. The outside of the pipes are sandblasted.

Product Norm is according to EN 10241 M.
Steel Quality is P235TR1.

Internal thread cylindrical BSPT-Rp (ISO 7-1 / EN 10226-1) and Internal thread cylindrical BSPG-G (ISO 228-1) can be done.

Upon request, we also produce Internal thread conical (NPT).

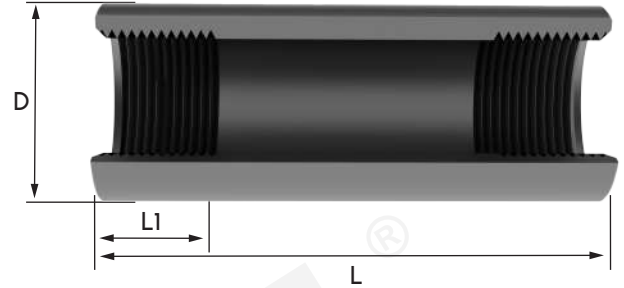
SIZE		LENGTH(L)		Unit: mm
DN	INCH	LENGTH(L)	HALF COUPLING LENGTH(L)	
6	1\8"	17	8	15.0
8	1\4"	25	11	18.5
10	3\8"	26	12	21.3
15	1\2"	34	15	26.6
20	3\4"	36	17	31.8
25	1"	43	20	39.5
32	1.1\4"	48	22	48.3
40	1.1\2"	48	22	54.5
50	2"	56	26	66.3
65	2.1\2"	65	30	82
80	3"	71	34	95
100	4"	83	40	121.4
125	5"	92	44	146.3
150	6"	92	44	173.3

ONE-TWO THREAD COUPLING

One Thread Coupling



Two Thread Coupling



Pipe Couplings are produced in accordance from EN 10217-1 carbon steel tubes. It is available as carbon steel, electro galvanized and upon request hot dip galvanized. The outside of the pipes are sandblasted.

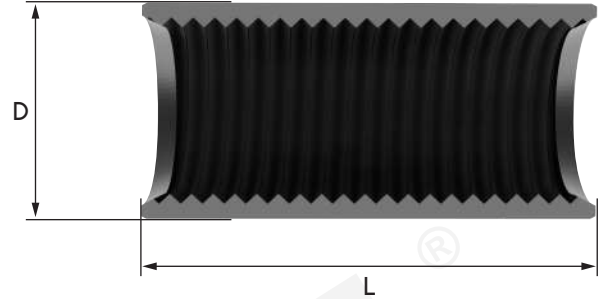
Product Norm is according to EN 10241 M. Steel Quality is P235TR1.

Internal thread cylindrical BSPT-Rp (ISO 7-1 / EN 10226-1) and Internal thread cylindrical BSPG-G (ISO 228-1) can be done.

Upon request, we also produce Internal thread conical (NPT).

SIZE		Unit: mm		
DN	INCH	LENGTH(L)	THREAD LENGTH(L1)	OUTSIDE DIAMETER(D)
6	1\8"	20-300	10	15.0
8	1\4"	20-300	12	18.5
10	3\8"	20-300	15	21.3
15	1\2"	25-300	20	26.6
20	3\4"	25-300	20	31.8
25	1"	30-300	25	39.5
32	1.1\4"	30-300	25	48.3
40	1.1\2"	30-300	25	54.5
50	2"	35-300	30	66.3
65	2.1\2"	40-300	35	82
80	3"	40-300	35	95
100	4"	50-300	45	121.4
125	5"	55-300	50	146.3
150	6"	55-300	50	173.3

THREADED FULL COUPLING



Threaded Full Couplings are produced in accordance from EN 10217-1 carbon steel tubes. It is available as carbon steel, electro galvanized. The outside of the pipes are sandblasted.

Product Norm is according to EN 10241 M.
Steel Quality is P235TR1.

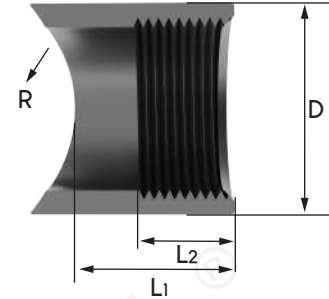
Internal thread cylindrical BSPT-Rp (ISO 7-1 / EN 10226-1) and Internal thread cylindrical BSPP-G (ISO 228-1) can be done.

Ask quote for other sizes & lengths.

Upon request, we also produce Internal thread conical (NPT).

SIZE		Unit: mm	
DN	INCH	LENGTH(L)	OUTSIDE DIAMETER(D)
10	3/8"	60	21.3
15	1/2"	60-80-100	26.6
20	3/4"	60-80-100	31.8
25	1"	60	39.5

O'LET PIPE COUPLING



O'let Pipe Couplings are produced in accordance from EN 10217-1 carbon steel tubes. It is available as carbon steel. The outside of the pipes are sandblasted.

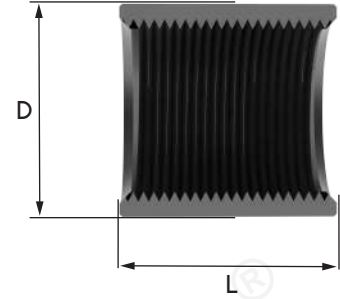
Product Norm is according to EN 10241 M.
Steel Quality is P235TR1.

Internal thread cylindrical BSPT-Rp (ISO 7-1 / EN 10226-1) and Internal thread cylindrical BSPG-G (ISO 228-1) can be done.

Upon request, we also produce Internal thread conical (NPT).

SIZE		Unit: mm			
DN	INCH	LENGTH(L1)	THREAD LENGTH(L2)	OUTSIDE DIAMETER(D)	RADIUS(R)
10	3\8"	24	15	21.3	ALL SIZE
15	1\2"	27	20	26.6	ALL SIZE
20	3\4"	30	20	31.8	ALL SIZE
25	1"	32	25	39.5	ALL SIZE
32	1.1\4"	35	25	48.3	ALL SIZE
40	1.1\2"	42	25	54.5	ALL SIZE
50	2"	45	30	66.3	ALL SIZE
65	2.1\2"	56	35	82	ALL SIZE
80	3"	63	35	95	ALL SIZE
100	4"	76	45	121.4	ALL SIZE

STAINLESS STEEL PIPE COUPLING



Stainless Steel Pipe Couplings are produced in accordance from SCH80 Stainless Steel Seamless Tubes.

It is available as 304/316/316L.

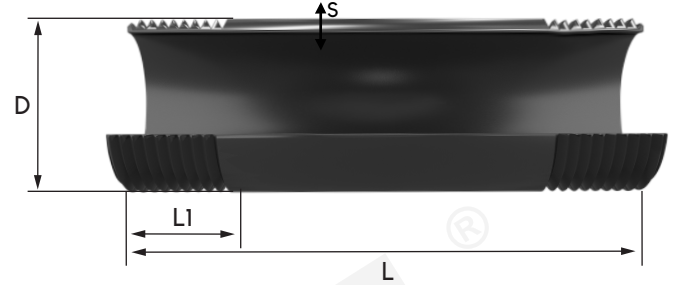
Product Norm is according to EN 10241 M.

Internal thread cylindrical BSPT-Rp (ISO 7-1 / EN 10226-1) and Internal thread cylindrical BSP-G (ISO 228-1) can be done.

Upon request, we also produce Internal thread conical (NPT).

SIZE		LENGTH(L)		Unit: mm
DN	INCH	LENGTH(L)	HALF COUPLING LENGTH(L)	
6	1\8"	17	8	15.0
8	1\4"	25	11	18.5
10	3\8"	26	12	21.3
15	1\2"	34	15	26.6
20	3\4"	36	17	31.8
25	1"	43	20	39.5
32	1.1\4"	48	22	48.3
40	1.1\2"	48	22	54.5
50	2"	56	26	66.3
65	2.1\2"	65	30	82
80	3"	71	34	95
100	4"	83	40	121.4
125	5"	92	44	146.3
150	6"	92	44	173.3

STAINLESS STEEL PIPE NIPPLE



Stainless Steel Pipe Nipples are produced in accordance from Stainless Steel Welded Tubes. It is available as 304/316/316L.

Product Norm is according to EN 10241 M.

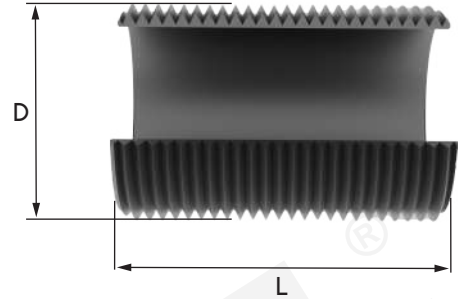
External thread conical BSPT-R (ISO 7-1 / EN 10226-1) and External thread cylindrical BSPP-G (ISO 228-1) can be done.

Upon request, we also produce External thread conical (NPT) from ASTM A53 tubes.

Unit: mm

SIZE	LENGTH(L)	OUTSIDE DIAMETER(D)	WALL THICKNESS(S)	THREAD LENGTH(L1)
1\8"	15-2000	10.5	2.2	7.4
1\4"	20-2000	13.7	2.2	11.0
3\8"	25-2000	17.2	2.3	11.4
1\2"	30-2000	21.3	2.6	15.0
3\4"	30-2000	26.9	2.6	16.3
1"	30-2000	33.7	3.2	19.1
1.1\4"	40-2000	42.4	3.2	21.4
1.1\2"	40-2000	48.3	3.2	21.4
2"	40-2000	60.3	3.6	25.7

FULL THREAD NIPPLE



Full Thread Nipples are produced in accordance from EN 10255 M series tubes and available as carbon steel and hot dip galvanized.

Product Norm is according to EN 10241 M.
Steel Quality is S195T.

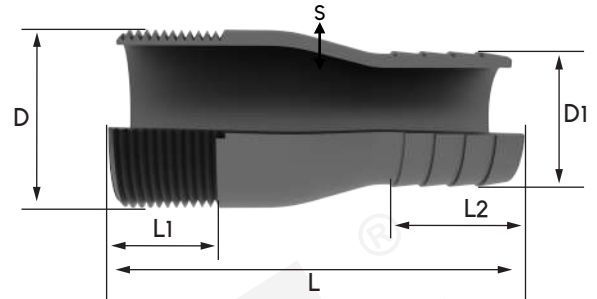
External thread cylindrical BSPP-G (ISO 228-1) can be done.

It is available production in different lengths.

Unit: mm

SIZE	LENGTH(L)	OUTSIDE DIAMETER(D)	WALL THICKNESS(S)
1\4"	19	13.7	2.2
3\8"	21	17.2	2.3
1\2"	27	21.3	2.6
3\4"	30	26.9	2.6
1"	33	33.7	3.2
1.1\4"	38	42.4	3.2
1.1\2"	38	48.3	3.2
2"	48	60.3	3.6
2.1\2"	51	76.1	3.6
3"	57	88.9	4.0
4"	70	114.3	4.5
5"	78	139.7	5.0
6"	78	165.1	5.0

HOSE PIPE NIPPLE



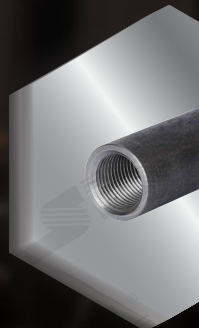
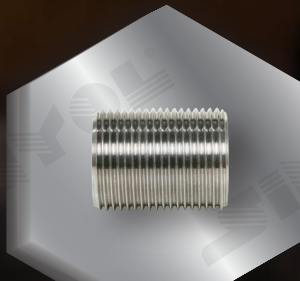
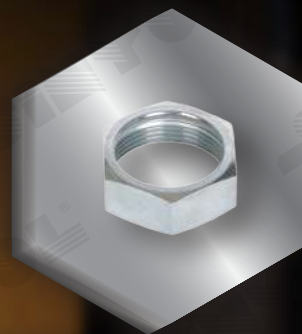
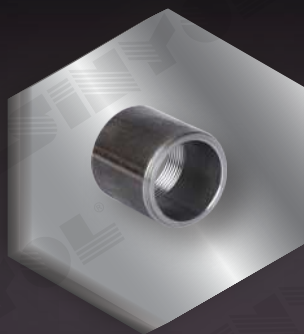
Hose Pipe Nipples are produced in accordance from EN 10255 M series tubes and available as carbon steel and electro galvanized.

Product Norm is according to EN 10241 M.
Steel Quality is S195T.

External thread conical BSPT-R (ISO 7-1 / EN 10226-1) and External thread cylindrical BSPP-G (ISO 228-1) can be done.

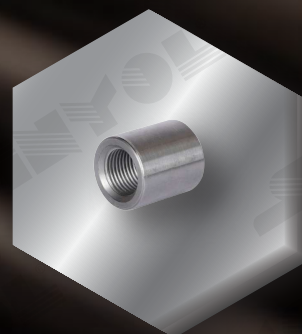
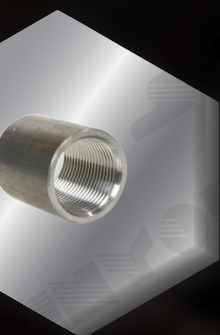
Unit: mm

SIZE	LENGTH(L)	OUTSIDE DIAMETER(D)	WALL THICKNESS(S)	THREAD LENGTH(L1)	BARREL HOSE DIAMETER (D1)	BARREL HOSE LENGTH (L2)
1\2"	70	21.3	2.6	15.0	ALL SIZE	25
3\4"	70	26.9	2.6	16.3	ALL SIZE	25
1"	75	33.7	3.2	19.1	ALL SIZE	30
1.1\4"	85	42.4	3.2	21.4	ALL SIZE	30
1.1\2"	85	48.3	3.2	21.4	ALL SIZE	30
2"	110	60.3	3.6	25.7	ALL SIZE	35
2.1\2"	120	76.1	3.6	30.2	ALL SIZE	40
3"	120	88.9	4.0	33.3	ALL SIZE	40
4"	135	114.3	4.5	39.3	ALL SIZE	45



SPECIAL PRODUCTION

Please contact with us for your custom productions



SAFE, HIGH QUALITY
**COST-EFFECTIVE AND
WIDE PRODUCT RANGE**



DENİZLİ/TURKEY

Hacıyüplü Mah. 3162 Sok.
No:43 Merkezefendi

www.sinyol.com.tr

/sinyolboru/ 

/sinyolboru/ 

/@sinyolboru9984 

SINYOL®